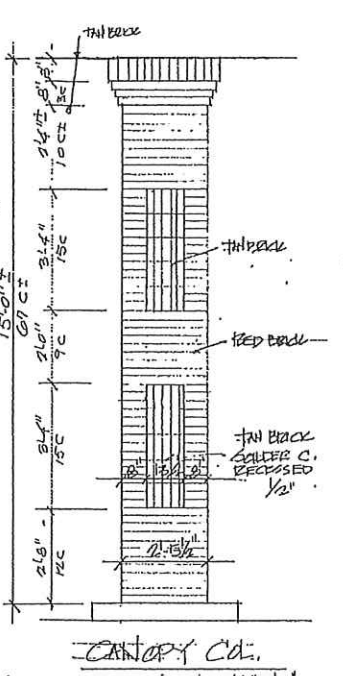
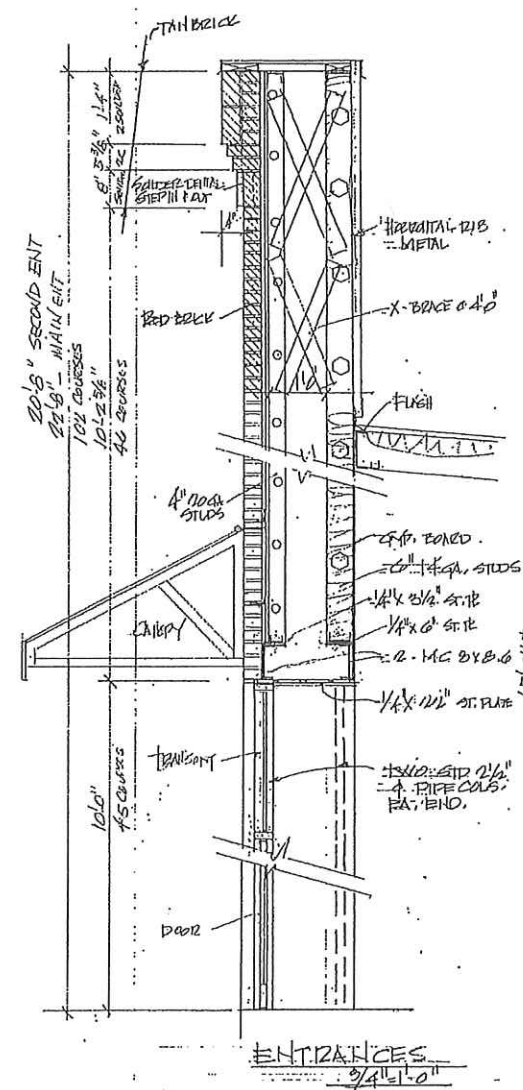
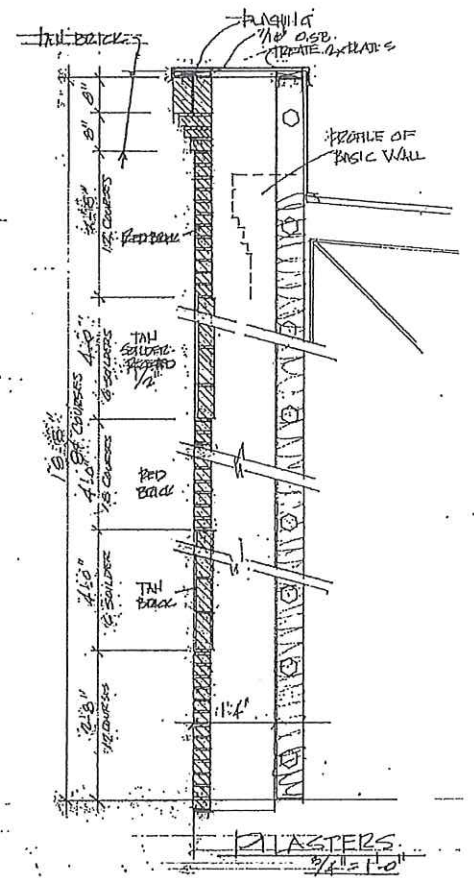
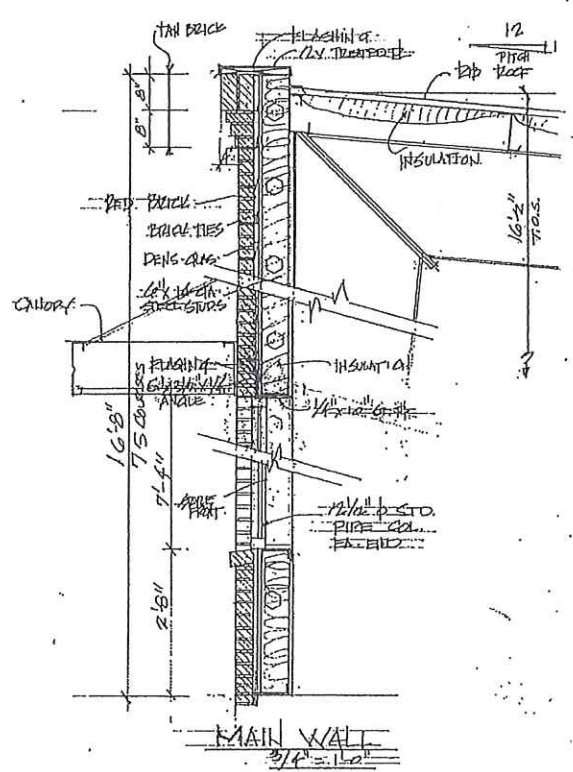


SITE PLAN

SCALE 1" = 20'-0"

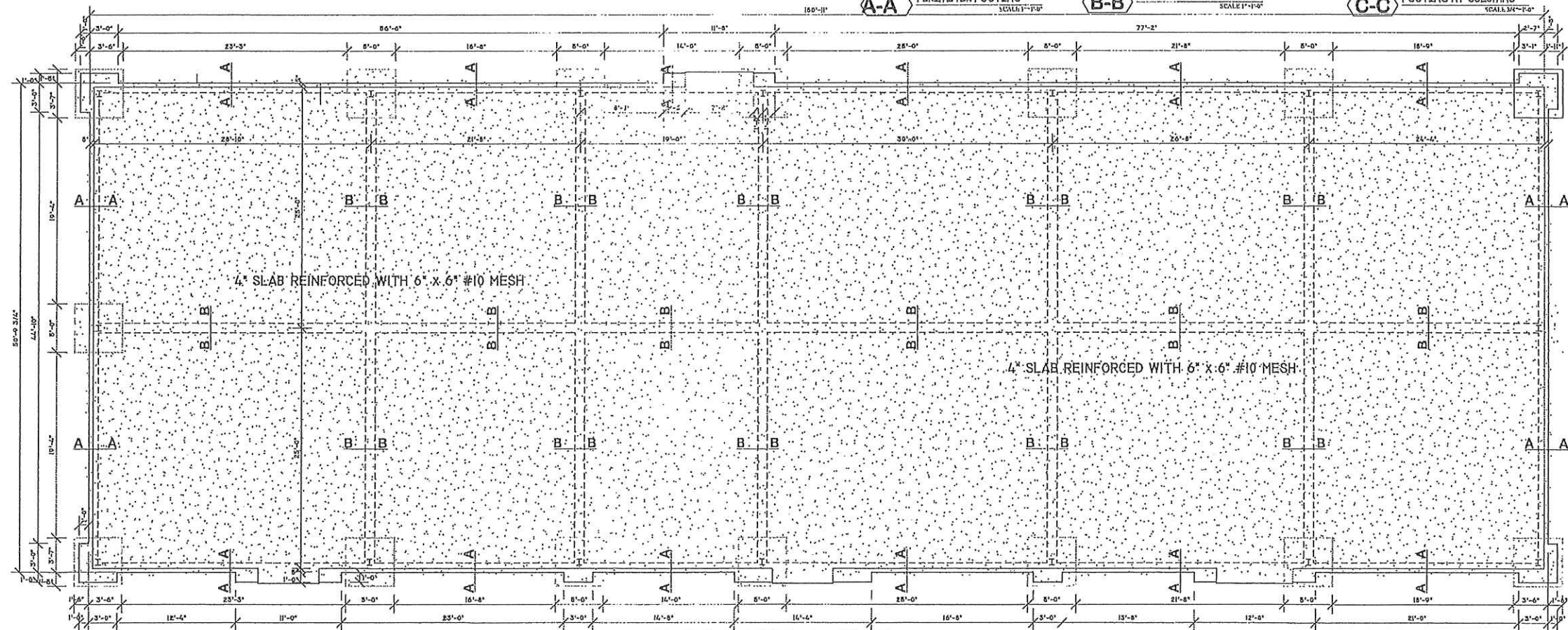
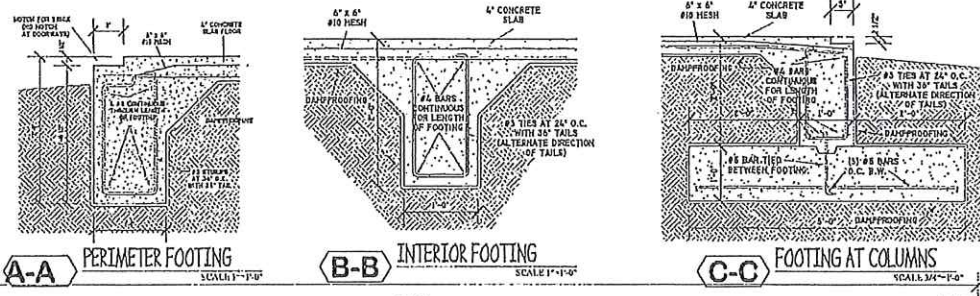


PRELIMINARY SITE PLAN		DEVELOPMENT FOR	
Alton B. Clingan, Jr.		JACKIE'S INTERNATIONAL	
Architect		Gluckstadt, Mississippi	
5144 Reddoch Drive Jackson, Mississippi 39211-4538 Phone and Fax (601) 713-0993 e-mail: altonbdclinganjrarchitect@outlook.com ALL MATERIAL HEREIN © 2021 ALTON B. CLINGAN JR.		Date 06/04/21	Rev.
Drawn RKC	Rev.	Page	of
Check	Rev.		



DETAILS
clingan and associates
 architect
 5339 I-55 NORTH, STE. 110B
 JACKSON, MISS. 39206-4141
 PHONE AND FAX 601-713-0993
 E-MAIL: clinganassociates@live.com
 ALL MATERIAL, NOTEN © 2017 CLINGAN AND ASSOCIATES ARCHITECT

DATE	01/12/17	BY		CHK	
DATE	RKC	BY		CHK	15
DATE		BY		CHK	26



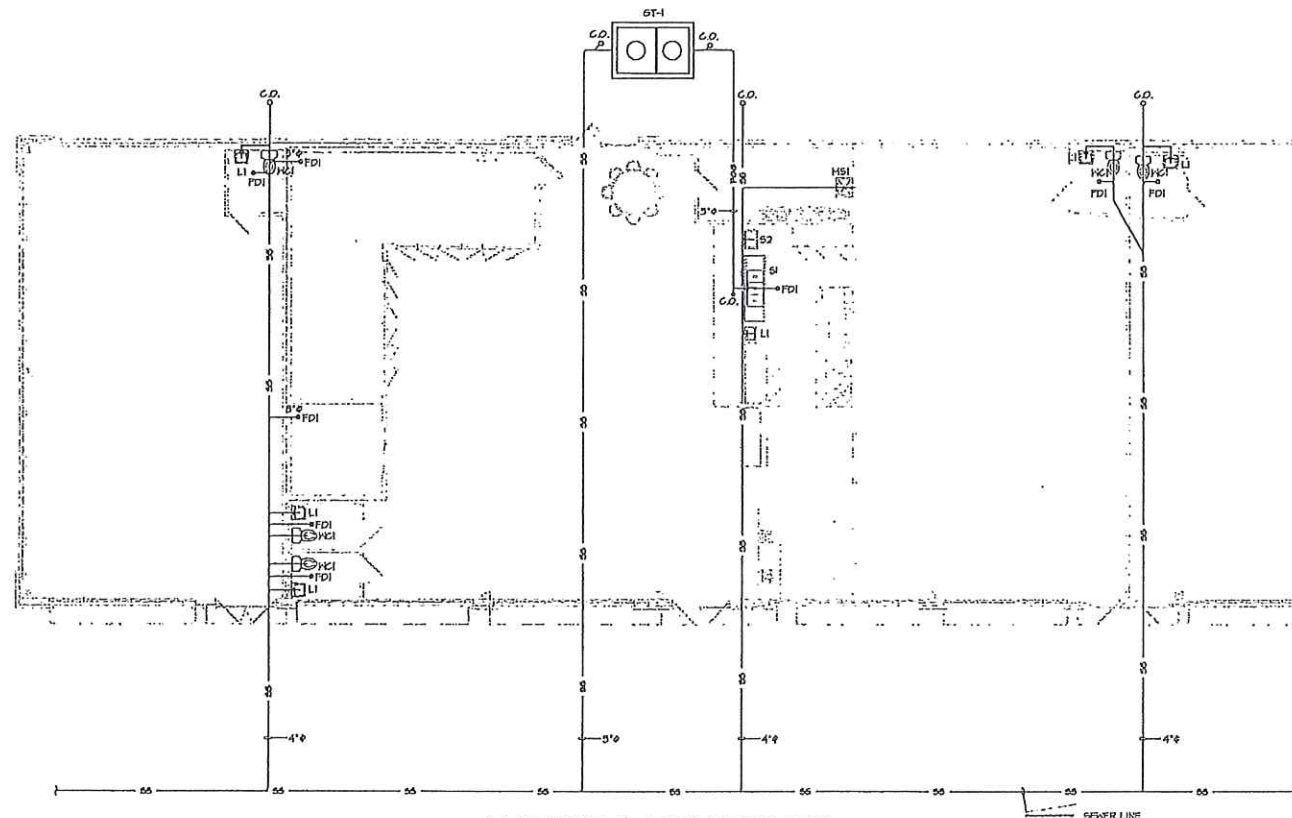
FOUNDATION PLAN

SCALE 3/16" = 1'-0"

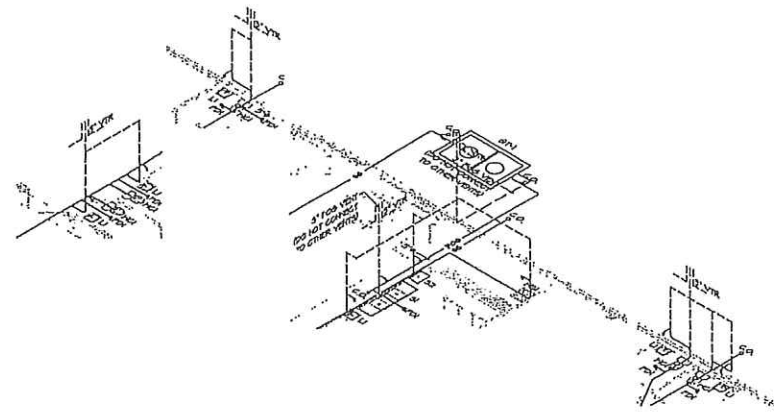


FOUNDATION PLAN		Gluckstadt, MS	
clingan and associates architect			
Drawn 07/01/16	Rev 05/03/17 RKC	Page	1 of 1
Drawn RKC	Rev	Rev	22/16
Check RKC	Rev	Rev	

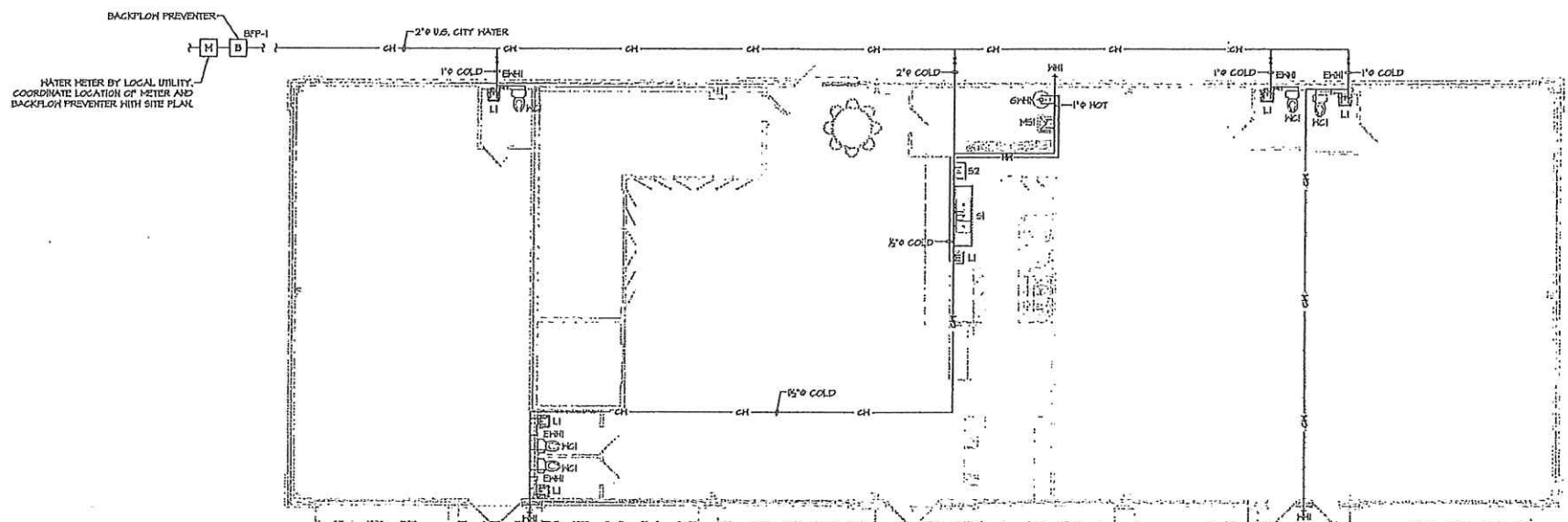
5339 I-55 NORTH, STE. 110B
 JACKSON, MISS. 39206-4141
 PHONE AND FAX 601-713-0993
 E-MAIL: clinganassociates@live.com
 ALL MATERIAL HEREIN © 2017 CLINGAN AND ASSOCIATES ARCHITECT



WASTE & VENT PLAN
SCALE 1/8" = 1'-0"



WASTE & VENT ISO
SCALE 1/8" = 1'-0"



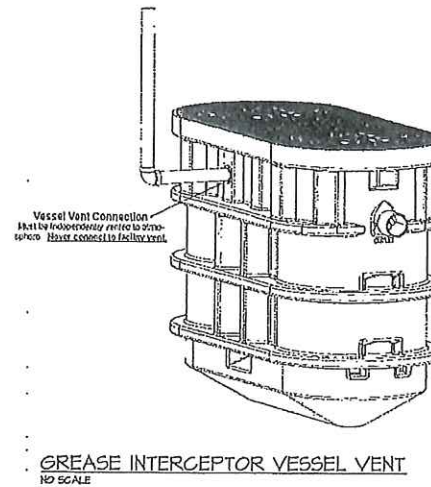
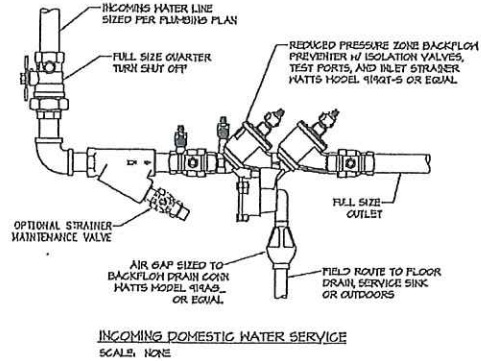
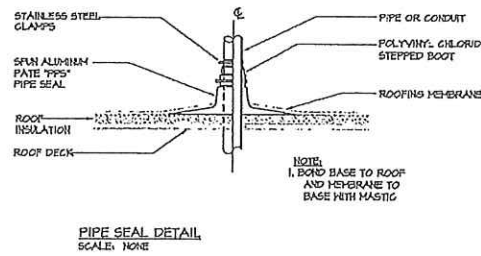
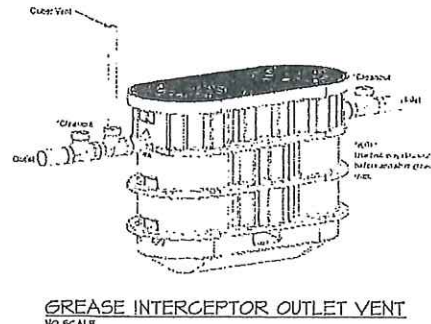
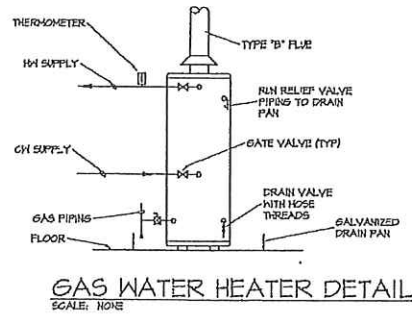
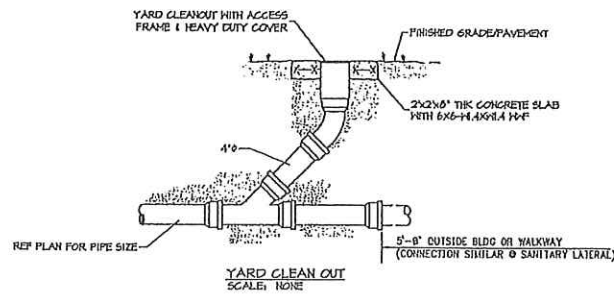
PLUMBING PLAN
SCALE 1/8" = 1'-0"

PIPING LEGEND

CH	COLD WATER PIPING
HW	HOT WATER PIPING
SS	SAN SEWER PIPING
POG	FAT OIL & GREASE PIPING
---	VENT PIPING

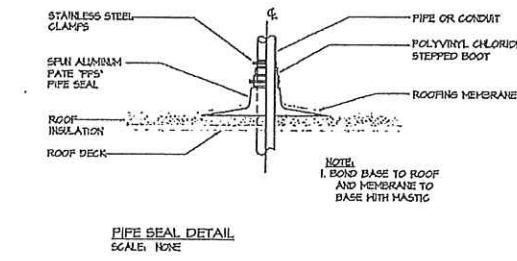
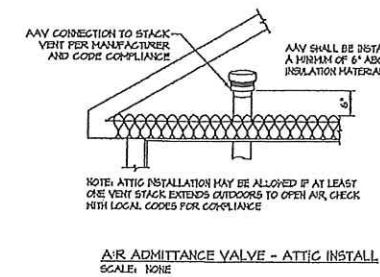
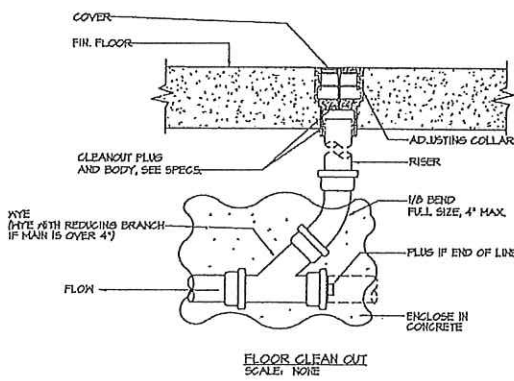


Thomas E. Lovelace Licensed Professional Engineer State of Mississippi License No. 10003	PLUMBING PLANS <i>clingen and associates</i> architect		Cluckstadt, MS	
	5339 I-55 NORTH, STE. 110B JACKSON, MISS. 39206-4141 PHONE AND FAX 601-713-0993 E-MAIL: clingenassociates@tix.com		Div: 07/26/16 Dwn: TEL Cht: kpc	Rev: 01/16 Sht: P-1 17 of 20



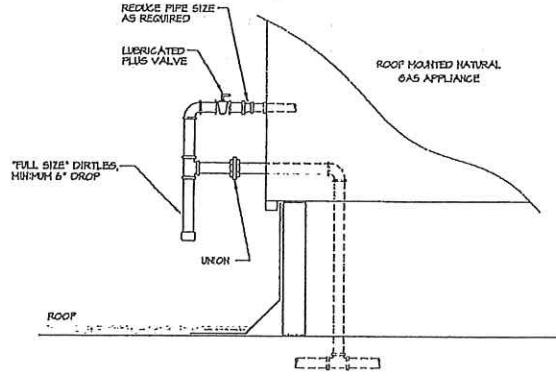
PLUMBING FIXTURE SCHEDULE				
MARK	DESCRIPTION	MINIMUM SUPPLY	MINIMUM DRAIN	MINIMUM TRAP
WC-1	Wall Mount 2 Level Water Cooler, ADA Compliant, Light Gray Panels, Stainless Steel Bowl, Equal To Elkay W/N ES2TRIC, 310VAC, Single Phase, 4.0 FLA	1/2 in.	2 in.	1 1/2 in.
S-1	Sink, Stainless Steel, 3 Compartment, with Left and Right Hand Drain Basins, Bowl Size 20" x 20", Equal to Advance Tabco TS-23-20-16L-X, with splash mounted faucet equal to DT-3-S	1/2 in.	2 in.	1 1/2 in.
S-2	Sink, Stainless Steel, 1 Compartment, Bowl Size 18" x 20", Equal to Advance Tabco TS-1-24-X, with splash mounted faucet equal to K-L	1/2 in.	2 in.	1 1/2 in.
L-1	Urethane Wall Hung Lavatory, Vitreous China, American Standard 0356-02, with Lavatory Faucet, Provide Direct Drain and Trap Wap.	1/2 in.	2 in.	1 1/2 in.
WC-1	Water Closet, Flush Tank, Elongated Bowl, 2002.014, With Solid Seat 5780.016, Equal To American Standard	1/2 in.	3 in.	N/A
MS-1	1 1/2" x 10" Pop Drain W/ Drain, P/N MSB02421 With 830AA Service Faucet, Provide 2" Drain Connector, Hose And Wap Bracket And Wap Hanger, Equal To Flo Products	1/2 in.	3 in.	3 in.
WH-1	3/4" Frost Proof Wall Hydrant, Equal To Woodford Model 70C	3/4 in.	N/A	N/A
FD-1	PVC Adjustable Floor Drain W/ Nickel-Brone Ring & Strainer, Sloux CM1 832-35PH	N/A	3 in.	2 in.
GWH-1	Gas Water Heater, 40 Gallon, 40,000 BTU/hr Input, Equal to Slax 0354-021, Provide Drain Pan With 3/4" Overflow Line to Outdoors.	See Plan	N/A	N/A
EW-1	Water Heater, 2.7 Gal., Elec., 1,440 Watt, 120V, 12 FLA (Requires Receptacle), Bosch ES2.5, Mount On Wall Under Lavatory, Provide Cmcro 11420 Wall Mount Drain Pan, Provide 3/4" Overflow To Floor Drain.	See Plan	N/A	N/A
S-1	8-quart, Fiberglass, Model 6-LE, With P8H 1100 Water Heater, 11,000 Watt, 240V, Must Be Connected to GFCI Breaker	3/4 in.	2 in.	2 in.
DF-1	Backflow Preventer, Reduced Pressure Zone, w/ Isolation Valves, Test Ports, And Inlet Strainer, Equal To Watts Model 919GT-5, Route overflow to service sink	2 in.	N/A	N/A
GI-1	Grease Interceptor, 1,000 Gallon, In-Ground, Equal to Thermacon TI-1816	1 in.	N/A	N/A

- GENERAL PLUMBING NOTES:**
- THE CONTRACTOR SHALL EXECUTE ALL WORK SO THAT IT PROCEEDS WITH A MINIMUM OF INTERFERENCE WITH OTHER TRADES AND NORMAL FUNCTIONS OF EXISTING FACILITIES AND SERVICES.
 - VERIFY EXACT ROUGH-IN AND FINAL EQUIPMENT REQUIREMENTS IN FIELD.
 - THE CONTRACTOR SHALL BE RESPONSIBLE FOR ALL FINAL CONNECTIONS TO PLUMBING FIXTURES AND EQUIPMENT USED, THIS INCLUDES, BUT IS NOT LIMITED TO, FURNISHING AND INSTALLING ALL TRAPS, DRAINS, AND SUPPLIES WITH STOPS.
 - THE CONTRACTOR SHALL VERIFY THAT ALL PIPING, AS SHOWN ON THESE DRAWINGS, WILL NOT CONFLICT WITH ANY DRAINS, SCUTLES, JOISTS, VENTS, EQUIPMENT, ETC.
 - COORDINATE ROUTING AND LOCATIONS OF WASTE AND VENT PIPING WITH ALL OTHER TRADES.
 - THE PLUMBING CONTRACTOR SHALL COORDINATE WITH THE GENERAL CONTRACTOR AND OTHER TRADES, ALL REQUIRED OPENINGS AND EXCAVATIONS. ALL REQUIRED OPENINGS IN FOUNDATIONS, FLOORS, HALL, AND ROOFS SHALL BE DESIGNED INTO THE STRUCTURE INITIALLY BY THE USE OF SLEEVES, CURBS, ETC. CUTTING AND PATCHING SHALL BE HELD TO A MINIMUM.
 - ALL ITEMS PROJECTING THROUGH THE ROOF SHALL BE FLASHED A MINIMUM OF 12" ABOVE THE ROOF. ALL VENTS SHALL BE A MINIMUM OF 10" FROM ANY OUTSIDE AIR INTAKE. ALL VENTS SHALL BE OFFSET SO THAT ALL ROOF PENETRATIONS SHALL BE TO THE REAR OF THE BUILDING.
 - ALL UNDERGROUND WASTE PIPES SHALL BE 2" MINIMUM.
 - LOCATE ALL HORIZONTAL SEWER MAINS AWAY FROM LOAD BEARING STRUCTURAL MEMBERS.
 - INSULATE WATER SUPPLY AND WASTE PIPING UNDER HANDICAPPED LAVATORIES WITH "VANS-LAY GUARD" JACKET.
 - CONTRACTOR SHALL FURNISH 1/2" "ARMAFLEX" PIPE INSULATION FOR ALL METAL CONDENSATE DRAIN PIPING.
 - PROVIDE STOPS AND SHOCK ABSORBERS AT EACH FIXTURE OR SHOCK OF FIXTURES.
 - PROVIDE VACUUM BREAKERS AT FIXTURES WITH HOSE THREAD CONNECTIONS AND APPLIANCES WITH DIRECT CONNECTIONS TO DOMESTIC WATER.
 - PROVIDE DI-ELECTRIC UNIONS AT ALL DISSIMILAR METAL PIPE CONNECTIONS AND APPLIANCES.
 - ALL WATER LINES INSTALLED IN EXTERIOR HALLS OR ABOVE CEILING SHALL BE INSTALLED INSIDE OF HALL INSULATION AND INSULATED INDIVIDUALLY TO PROTECT FROM FREEZING.
 - FLASH HANDLES ON HANDICAP FIXTURES SHALL BE INSTALLED ON THE HOSE SIDE OF THE STALL.
 - A PRESSURE TEST OF PLUMBING SYSTEM SHALL BE PERFORMED PRIOR TO THE INSTALLATION OF DRY-FALL. THIS TEST IS TO BE PERFORMED UNDER THE SUPERVISION OF OWNER OR OWNER'S DESIGNER.
 - ALL VENTS TO BE TERMINATED IN ACCORDANCE WITH ALL APPLICABLE CODES.
 - PERFORATIONS THRU RATED HALL AND FLOOR ASSEMBLIES SHALL BE PROTECTED BY UL RATED FIRESTOPS COMPATIBLE AND EQUAL IN RATINGS TO THE HALL OR FLOOR ASSEMBLY BEING PENETRATED.
 - ALL SEWER, VENT, AND WATER PIPING ROUTED IN CEILING SHALL BE COORDINATED WITH FLOOR FRAMING TO RUN PARALLEL TO JOISTS AND TO MINIMIZE PENETRATIONS THRU FRAMING MEMBERS.
 - ALL WATER HEATER DRAIN PANS SHALL BE MIN. 6" DEEP. PROVIDE 1" INDIRECT WASTE PIPE TO NEAREST FLOOR DRAIN OR ROUTE TO OUTSIDE OF BUILDING. TERMINATE EXTERIOR DRAINS WITH 10" ILL. RIBBED DOWN 6" TO 24" ABOVE FINAL GRADE. PROVIDE TAP VALVE RATED AT 100 PSIS AND 180°F. PIPE TO PAN WITH COPPER PIPE SIZED TO VALVE.
 - PLUMBING CONTRACTOR SHALL PROVIDE INDIRECT CONDENSATE DRAIN TO WITHIN 2 FT. OF COOLING COILS. CONNECT DRAIN TO HOSE SIDE OF TRAP OR FLOOR DRAIN OR SERVICE SINK WITH 2" MIN. AIR BREAK. FINAL CONNECTION TO COOLING COIL BY MECH CONTRACTOR.

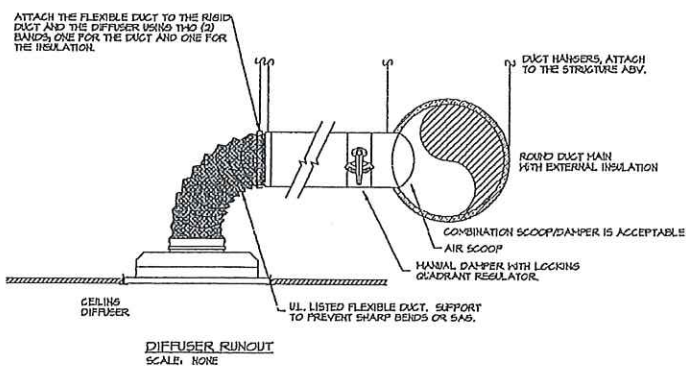


Thomas E. Lovatco Mechanical Engineering 2423 Senter Drive Roosevelt, MS 39059 Phone: (800)803-9991 e-mail: thlova@att.net	PLUMBING DETAILS <i>clingan and associates</i> architect 5310 I-55 NORTH, STE. 1100 JACKSON, MISS. 39206-4141 PHONE AND FAX 601-713-6993 E-MAIL: cclingan@clinganlive.com ALL MATERIAL HEREIN © 2018 CLINGAN AND ASSOCIATES ARCHITECT	Gluckstadt, MS Date: 8/28/18 Drawn: RJC Checked: RJC Scale: P-2 18 of 26
---	---	---

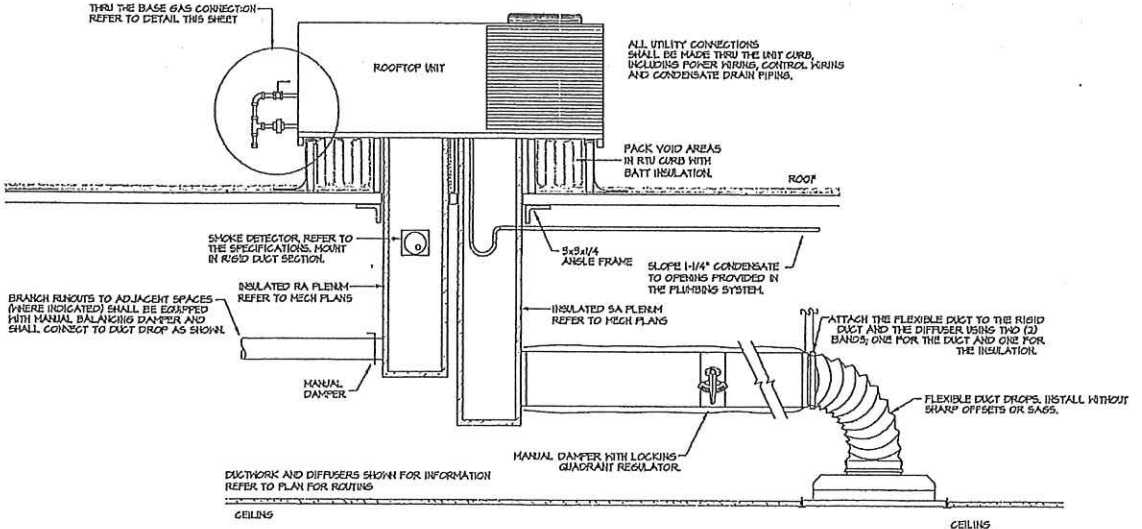
DIFFUSER, REGISTER & GRILLE SCHEDULE					
TYPE	SERVICE	CFM RANGE	SIZE	NECK	RINOUT
TITUS TIS	SUPPLY AIR SQUARE DIFFUSER LAY IN CEILING	0 - 100	24" x 24"	6"ø	6"ø
		105 - 230	24" x 24"	8"ø	8"ø
		235 - 360	24" x 24"	10"ø	10"ø
		365 - 600	24" x 24"	12"ø	12"ø
		605 - 900	24" x 24"	14"ø	14"ø
TITUS SOF	RETURN AIR/ EXHAUST AIR CEILING GRILLE LAY IN CEILING	0 - 100	24" x 24"	6"ø	6"ø
		105 - 230	24" x 24"	8"ø	8"ø
		235 - 375	24" x 24"	10"ø	10"ø
		380 - 600	24" x 24"	12"ø	12"ø
		605 - 900	24" x 24"	14"ø	14"ø
		905 - 1250	24" x 24"	16"ø	16"ø
		1255 - 1750	24" x 24"	18"ø	18"ø
TITUS SOORS	SUPPLY AIR HALL REGISTER	0 - 150	8" x 6"	—	8" x 6"
		150 - 230	8" x 6"	—	8" x 6"
		230 - 350	12" x 6"	—	12" x 6"
		350 - 450	12" x 8"	—	12" x 8"
		450 - 600	12" x 10"	—	12" x 10"
TITUS SOORL	RETURN/ EXHAUST HALL GRILLE	0 - 250	8" x 8"	—	8" x 8"
		255 - 600	8" x 10"	—	8" x 10"
		605 - 1200	12" x 16"	—	12" x 16"
		1205 - 1600	16" x 16"	—	16" x 16"
		1605 - 2000	20" x 16"	—	20" x 16"
TITUS THR	ROUND SUPPLY DIFFUSER (SPIRAL DUCT MOUNT)	0 - 100	8"ø	6"ø	6"ø
		105 - 230	10"ø	8"ø	8"ø
		235 - 350	12"ø	10"ø	10"ø
TITUS SOOFS	RECTANGULAR SUPPLY DIFFUSER (SPIRAL DUCT MOUNT)	0 - 150	6" x 6"	—	6" x 6"
		150 - 250	6" x 6"	—	6" x 6"
		250 - 450	12" x 6"	—	12" x 6"



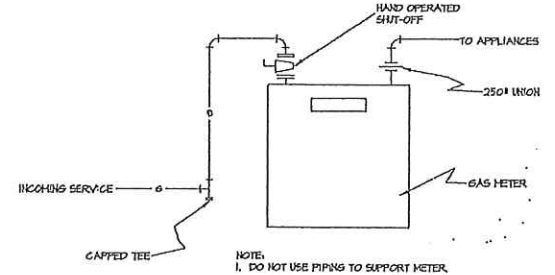
THRU THE BASE GAS CONNECTION
SCALE: NONE



DIFFUSER RUNOUT
SCALE: NONE



ROOFTOP UNIT DETAIL
SCALE: NONE



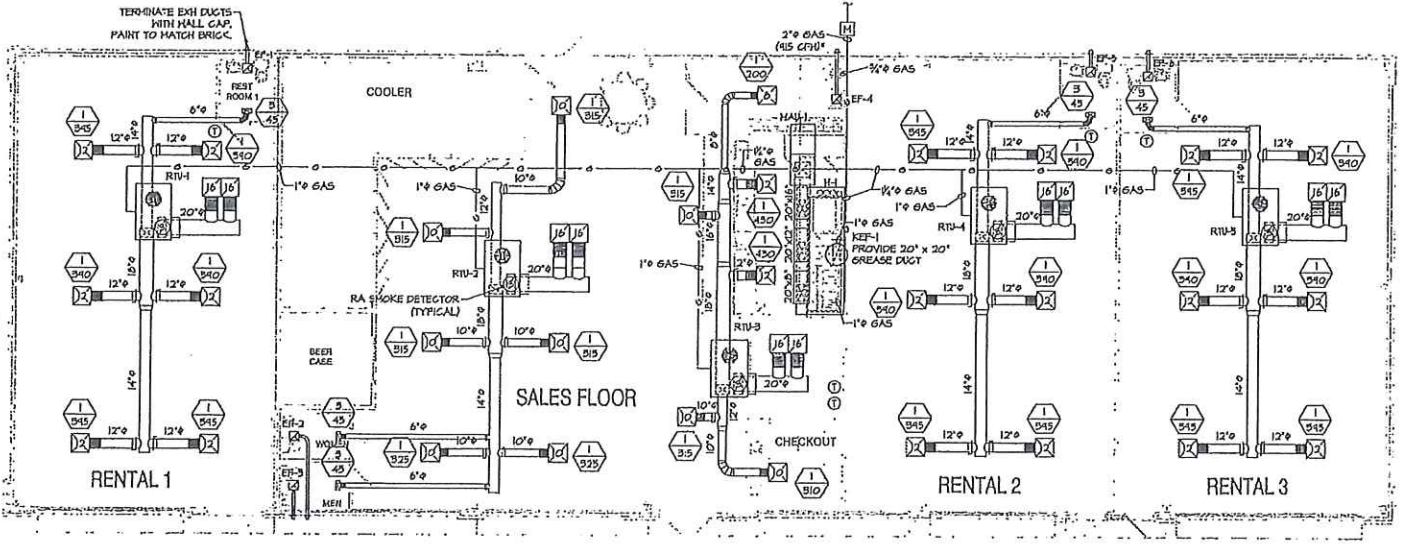
TYPICAL GAS METER PIPING DETAIL
SCALE: NONE

TAG NO.	FLCH (CFM)	STATIC	VOLTAGE	FLA	DESIGN BASIS	DUCT TO OUTDOORS
EF-1 REV EF-6	50	1/8" WG	120V/1Ø	0.4 AMP	BROWN 600	3"

NAT. GAS USAGE (CFM)	
RHU-1	15
RHU-2	15
RHU-3	15
RHU-4	15
RHU-5	15
COOK TOP	150
FRYER	150
WATER HEATER	40
TOTAL	315

GAS-ELECTRIC PACKAGED UNIT SCHEDULE																						
MARK	RAT. COOLING CAP. (TONS)	DESIGN BASIS	MODEL NO.	REFRIGERANT	ORIENTATION	AIRFLOW DATA				COOLING PERFORMANCE				HEATING				ELECTRICAL DATA				HEIGHT (FT)
						SA CFM	OA CFM	ESP (IN. H ₂ O)	TOTAL COOLING (BTU/H)	SEER	EER	INPUT (BTU/H)	OUTPUT (BTU/H)	VOLTAGE	HEA	MOCP	FLA					
RHU-1	6	CARRIER	48TCEA01	R-410A	DOWNFLOW	2,400	30	0.5	73,600	54,420	13	11	13,000	43,000	208-230/1/60	54	50	33	715			
RHU-2	5	CARRIER	48TCEA06	R-410A	DOWNFLOW	2,000	362	0.5	62,800	41,910	13	11	13,000	43,000	208-230/1/60	42	50	44	715			
RHU-3	5	CARRIER	48TCEA06	R-410A	DOWNFLOW	2,000	362	0.5	62,800	41,910	13	11	13,000	43,000	208-230/1/60	42	50	44	715			
RHU-4	6	CARRIER	48TCEA01	R-410A	DOWNFLOW	2,400	356	0.5	73,600	54,420	13	11	13,000	43,000	208-230/1/60	54	50	33	715			
RHU-5	6	CARRIER	48TCEA01	R-410A	DOWNFLOW	2,400	350	0.5	73,600	54,420	13	11	13,000	43,000	208-230/1/60	54	50	33	715			

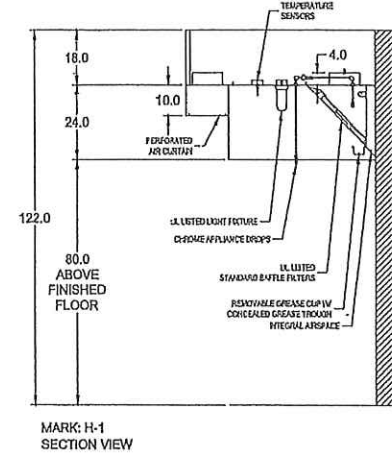
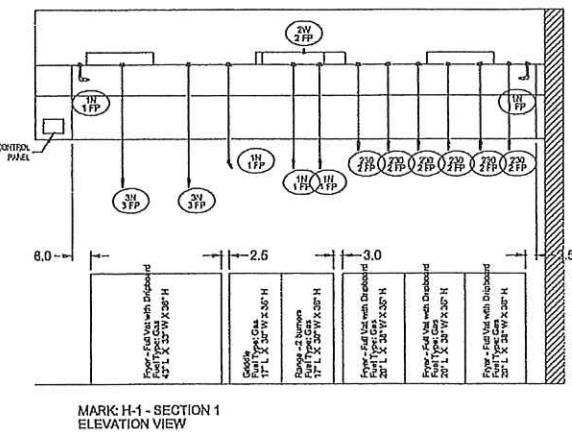
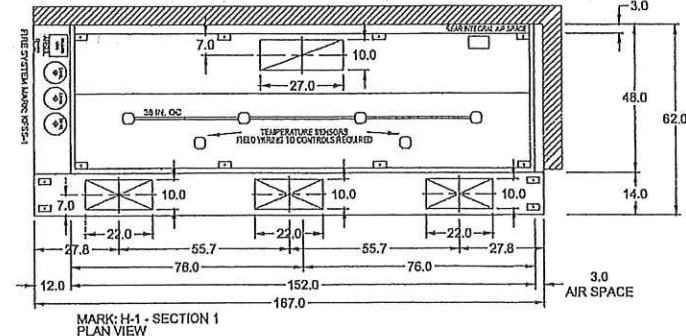
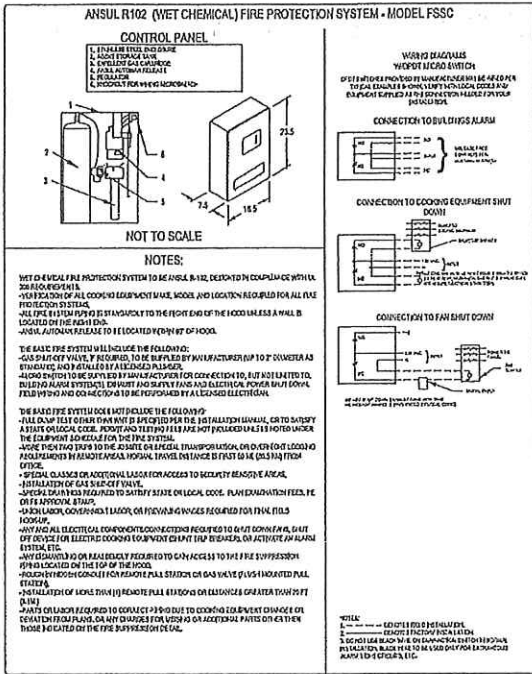
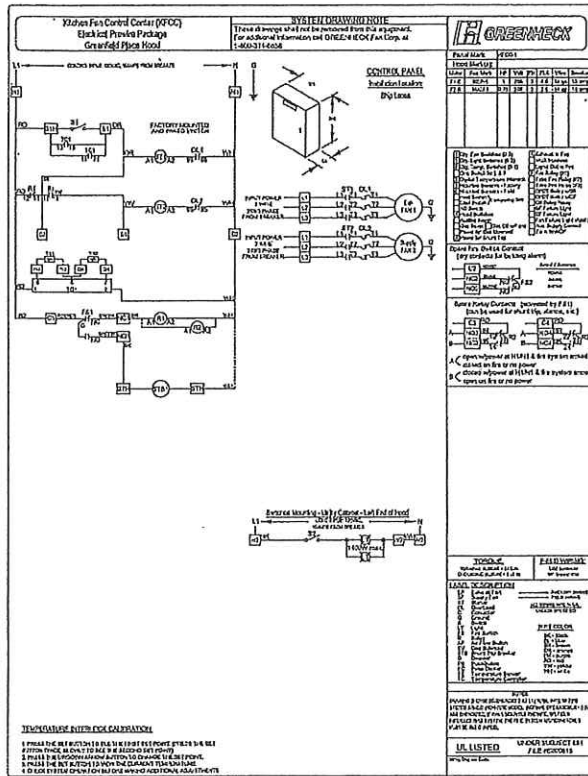
ALL RATINGS @ 80° F AMBIENT AIR AND 45° F DB, 67° F WB MIXED AIR. EQUIPMENT AND INSTALLATION PROCEDURES SHALL CONFORM TO 2009 INTL. ENERGY CONSERVATION CODE. PROVIDE ELECTRONIC PROGRAMMABLE THERMOSTATS MOUNTED @ 48" AFF. PROVIDE 2" NEW 1" FILTERS. PROVIDE OUTDOOR AIR ECONOMIZER.



HVAC PLAN
SCALE 1/8" = 1'-0"



Thomas E. Lovelace Licensed Professional Engineer State of Mississippi 2443 S. 1st Ave Room 111, 39059 Phone: (601) 903-3001 Email: thomas@thelovels.com	HVAC PLAN clingan and associates architect 5339 I-55 NORTH, STE. 110B JACKSON, MISS. 39206-4141 PHONE AND FAX 601-713-0993 EMAIL: clingan@clingan.com ALL MATERIAL HEREIN © 2016 CLINGAN AND ASSOCIATES ARCHITECT	G. Luckstadt, MS Date: 02/28/18 Drawn: TEL Checked: TEL M-1
---	--	---



CONTROL INFORMATION		ELECTRICAL CONTROL PACKAGE		USER INTERFACE		FANS CONTROLLED			
MARK	MODEL	LOCATION	TYPE	LOCATION	MARK	TYPE	VOLT	PHASE	HP
KFCO		SHP LOOSE	SWITCHES	CABINET - LEFT END OF H-1	KEF-1	EXHAUST	208	3	1
					MAU-1	SUPPLY	208	3	3/4

CONTROL FEATURES

CONTROL PANEL ENCLOSURE - 16 GA 300 SERIES STAINLESS STEEL ENCLOSURE (NEMA-1) - DIMENSIONS 12 X 20 X 6

STARTERS PROVIDED IN CONTROL PANEL - QTY 2

2 POSITION LIGHT SWITCH - QTY 1

2 POSITION FAN SWITCH - QTY 1

FACTORY MOUNTED EXHAUST TEMPERATURE SENSORS - QTY 2

TURN ON EXHAUST IN FIRE

POWER FOR SHUNT TRIP

THERMAL OVERLOADS IN CABINET

HOOD INFORMATION		HOOD DIMENSIONS (IN.)			HOOD CONSTR.		HOOD TEMP. RATING		EXHAUST				SUPPLY		TOTAL WEIGHT	SECTION LOCATION	
HOOD NO.	MARK	LENGTH	WIDTH	HEIGHT	CONSTR.	TEMP. RATING	TOTAL CFM	COLLAR(S)	WIDTH	LENGTH	DIA.	CFM	S.P.	MUA CFM	AC CFM	LBS.	
1	H-1	152	48	24	430 SS W/REAR EXPOSED	600 DEG F	2850	10	27		2850	0.409	2280		493.333	SINGLE	

HOOD INFORMATION		LIGHTING DETAILS		GREASE FILTRATION DETAILS		UTILITY CABINET(S)				
HOOD NO.	MARK	FIXTURE TYPE	QTY	FOOT CANDLES	TYPE / MODEL	QTY	SIZE (IN.)	LOCATION	FIRE SYSTEM	CONTROLS
1	H-1	INCANDESCENT (GLOBE)	4	43.42	BAFFLE	2	18	LEFT	ANSUL R102	SWITCHES
		100W A19 (BULBS NOT INCL.)			STAINLESS STEEL	6	20			

SUPPLY PLENUM INFORMATION		POS.		TYPE		SIZE (IN.)		INSULATED		DAMPER(S)		LED LIGHT(S)		TOTAL		COLLARS						
HOOD NO.	MARK	FRONT	ASP	L	W	H	NO	NO	NO	NO	NO	QTY	CFM	TYPE	MOUNTING	QTY	W	L	DIA.	CFM	S.P.	VEL.
1	H-1			167	14	10							2280	MUA	FACTORY	3	10	22		760	0.12	497

HOOD OPTIONS

UL 710 LISTED W/ OUT EXHAUST FIRE DAMPER - UL #MH11726

BACK INTEGRAL AIR SPACE - 3 IN WIDE

RIGHT NON-INTEGRAL AIR SPACE - 3 IN WIDE

18 IN HIGH CEILING ENCLOSURES - FRONT LEFT RIGHT - FIELD INSTALLED

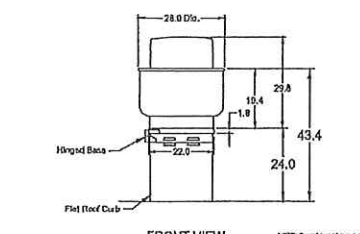
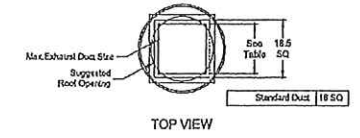
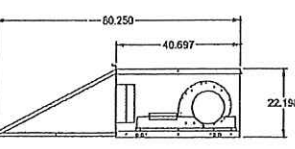
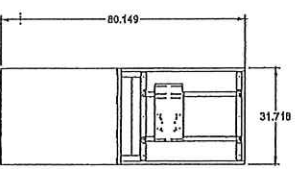
FACTORY MOUNTED EXHAUST COLLAR(S)

PERFORMANCE ENHANCING LIP (PEL) TECHNOLOGY

STANDING SEAM CONSTRUCTION FOR SUPERIOR STRENGTH

EQUIPMENT SCHEDULE									
Non-Tempered Make-Up Air Unit									
Qty	Manufacturer Model	Volume	External SP	Total SP	FFPM	Operating Power	Weight	Mark: MAU-1	
1	NSFB-110-115-01	2,850 CFM	0.8 in. wg	0.702 in. wg	0.37	0.74 hp	242 lb		

EQUIPMENT SCHEDULE									
Belt Drive Upblast Centrifugal Roof Exhaust Fan									
Qty	Manufacturer Model	Volume (CFM)	Total SP (in. wg)	FFPM	Operating Power (hp)	Weight (lb)	Size (in)	Mark: KEF-1	
1	CUBE-101-10	2,850	1.333	0.04	1.23	205,000	OP 1725	1	4.8



Thomas E. Lovelace
Mechanical Engineering

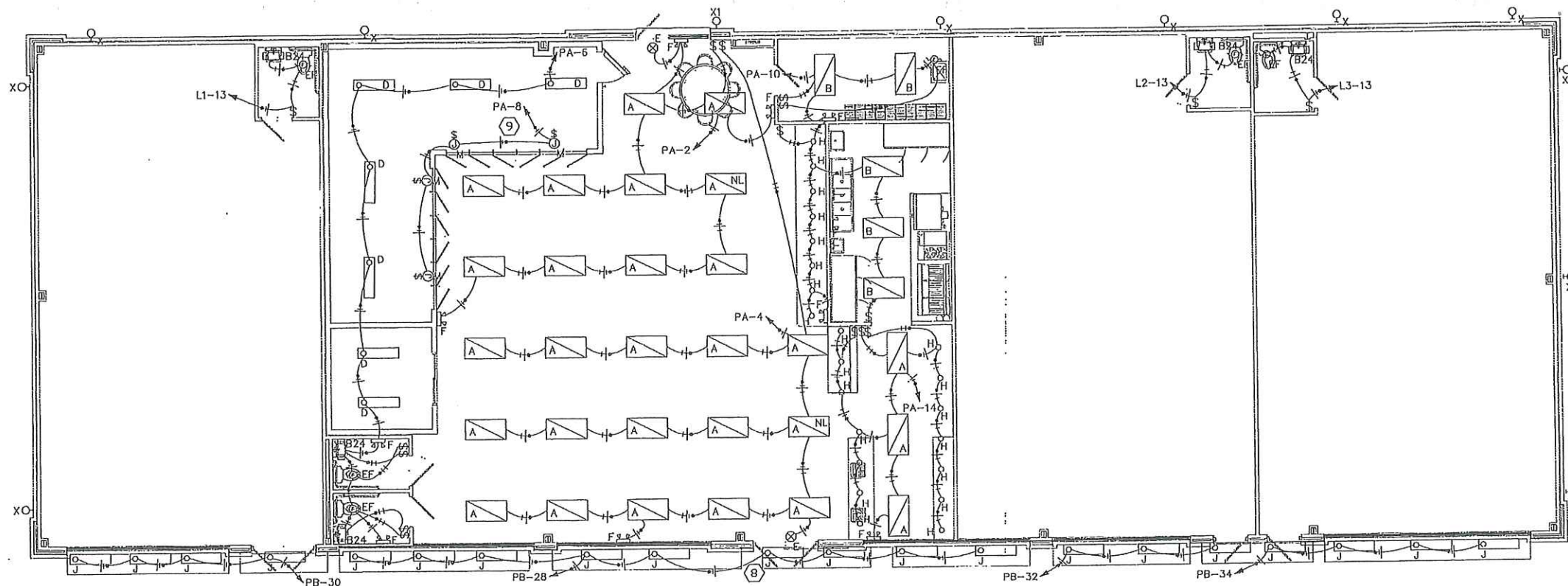
clingan and associates
architect

5330 I-55 NORTH, STE. 110B
JACKSON, MISS. 39206-4141
PHONE AND FAX 601-713-0993
E-MAIL: clinganassociates@live.com

Gluckstadt, MS

Date: 8/29/18
Drawn: TEL
Checked: JBC

M-2

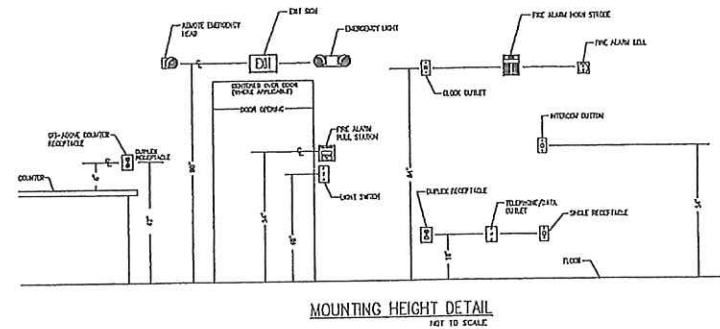
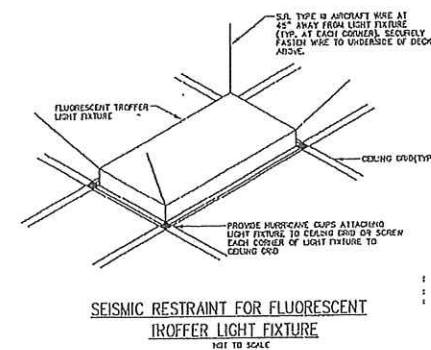
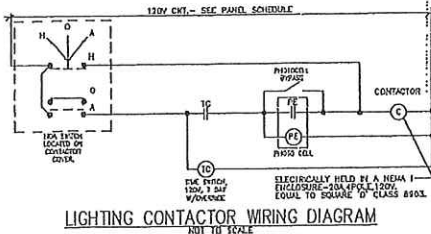


LIGHTING PLAN
SCALE: 3/16" = 1'-0"

LUMINAIRE SCHEDULE							
CALLOUT	SYMBOL	LAMP	DESCRIPTION	BALLAST	MOUNTING	MODEL	INPUT VOLTS
A	[Symbol]	(3) 32W F32T8/741	2 X 4, 3 LAMP TROUSER	ELECTRONIC	RECESSED	LITHONIA 2018 S32 A12120 CRB	110
B	[Symbol]	(2) 32W F32T8/741	2 X 4, 2 LAMP TROUSER	ELECTRONIC	RECESSED	LITHONIA 2018 232 A12120 CRB	74
B24	[Symbol]	(1) 17.5W LED	24" WALL MOUNT LED, 3000K COLOR, VIBRANT POE SENSOR, DUS TO LOW WHEN ROOM UNOCCUPIED, MIGHT WITHOUT LEVEL MANAGEMENT	ELECTRONIC	WALL	LITHONIA W3.18 LF350 H57 (1100 DASH)	17.5
D	[Symbol]	(2) 32W F32T8/741	DAMP LOCATION FLUORESCENT	ELECTRONIC	SURFACE	LITHONIA DL4 232 ARDP 120 CRB	74
E	[Symbol]	(1) 4W LED	LED THERMOPLASTIC EXT LAMP WITH BATTERY	ELECTRONIC	CEILING	LITHONIA LOUSW4R 120/ET7 EL H	12
F	[Symbol]	(2) 5.4W LED	DOAL HEAD EMERGENCY LIGHT, WHITE, LITHONIA WITH PHOSPHATE, LED, 96 LISTED DAMP LOCATION, 50F-101F, SELF-DIAGNOSTIC, UNIVERSAL VOLTAGE, 120-277V 50 OR 60HZ, 8" PAIR CORDS AT 38" 7.5' CORDING, 26" 10" CORDING, 56" 12" CORDING	ELECTRONIC	WALL	LITHONIA ELK1 W LP45V5 LTP 52	19.2
H	[Symbol]	(3) 26W 260IT	6" RECESSED CAN LIGHT, WHITE DISPLAY, TEMPERED 17.3 FLAT FRISMATIC LENS	ELECTRONIC	CEILING	LITHONIA LFB 120 2/240ITT F6L73 120 CRB	60
J	[Symbol]	(1) 32W 32T8	LOW PROFILE STRIP LIGHT TB	ELECTRONIC	WALL	LITHONIA Z1 32 120 GE100SS T8 W	32
N	[Symbol]	(1)	JUNCTION BOX FOR HIGH LIGHTS WITH WALL SWITCH	ELECTRONIC	CEILING	JUNCTION BOX FOR HIGH LIGHTS WITH WALL SWITCH	250
P	[Symbol]	(2) 400W	LIGHTS SUPPLIED WITH GAS CANOPY	ELECTRONIC	CEILING	SEE GAS CANOPY	435
P1	[Symbol]	(1) 277V LED	OS22 LED W/A (2) LED LIGHT ENGINES, (2) 1000MA DRIVERS, AMPLE LED, TYPE 146, OPTICS WITH HOUSE SIDE SHEILD, NIGHTTIME FRIENDLY, EPA 1.1	ELECTRONIC	POLE	LITHONIA OS22 LED 500 1000 MA AMP/PC T46 N14VOLT IIS SPA	277
X	[Symbol]	(1) 100W MH ED-17	DECORATIVE WALL MOUNTED FORWARD THROU METAL HAUSE, NIGHTTIME FRIENDLY, EMERGENCY LED SECONDARY SOURCE	ELECTRONIC	WALL	LITHONIA MHV 100W FT 120 SCMA	140
XI	[Symbol]	(1) 100W MH ED-17	DECORATIVE WALL MOUNTED FORWARD THROU METAL HAUSE, NIGHTTIME FRIENDLY, EMERGENCY LED SECONDARY SOURCE	ELECTRONIC	WALL	LITHONIA MHV 100W FT 120 SCMA ELED	110

POWER & AUX ELEC PLAN
SCALE: 3/16" = 1'-0"

- NOTES THIS SHEET
- CONTRACTOR SHALL VERIFY AND COORDINATE THE EXACT LOCATION OF ALL DEVICES WITH THE ARCHITECTURAL PLANS.
 - ALL WORK SHALL BE DONE IN ACCORDANCE WITH FEDERAL, STATE, AND LOCAL CODES AND THE LATEST EDITION OF THE NEC.
 - FURNISH AND INSTALL 2 - 4" PVC CONDUITS FROM THE TRANSFORMER PAD TO THE UTILITY CO. POLE. ONE CONDUIT TO RISE UP POLE AS REQUIRED, ONE CONDUIT TO BE CAPPED AT BASE OF POLE.
 - BACKBOARD TO THE PROPERTY LINE AS DIRECTED BY LOCAL TELEPHONE VENDOR FOR TELEPHONE SERVICE ENTRANCE. INSTALL PULL STRING/WIRE IN CONDUIT.
 - THIS JUNCTION BOX TO BE INSTALLED ABOVE ACCESSIBLE CEILING FOR CONNECTION TO BUILDING MOUNTED SIGN. VERIFY EXACT LOCATION PRIOR TO INSTALLATION.
 - VERIFY EXACT LOCATION OF THIS DEVICE PRIOR TO INSTALLATION. INSTALL ABOVE ACCESSIBLE CEILING FOR SIGNAGE. PROVIDE CORD AND CAP AS REQUIRED FOR FINAL INSTALLATION.
 - VERIFY EXACT LOCATION OF THIS DEVICE PRIOR TO INSTALLATION. INSTALL ABOVE ACCESSIBLE CEILING FOR CONNECTION TO ACCESSIBLE TRANSFORMER.
 - INSTALL A DUPLEX RECEPTACLE ABOVE ACCESSIBLE CEILING OR AS DIRECTED FOR CONNECTION OF WINDOW NEON SIGNS. NEON SIGNS TO BE FURNISHED AND INSTALLED BY OTHERS.
 - INSTALL A JUNCTION BOX AND SINGLE POLE SWITCH AT COOLER WALL AND ABOVE ACCESSIBLE CEILING FOR CONNECTION TO HEON TRANSFORMERS. NEON AND TRANSFORMERS TO BE FURNISHED AND INSTALLED BY OTHERS. ELECTRICAL CONTRACTOR TO MAKE FINAL CONNECTION AT J-BOX.
 - INSTALL THESE DEVICES IN CASEWORK AS DIRECTED BY THE ARCHITECT.
 - CONTRACTOR SHALL VERIFY THE EXCT LOCATION AND MOUNTING HEIGHT WITH VENDOR DRAWINGS.
 - FURNISH AND INSTALL A RECEPTACLE, AS REQUIRED, AND MALE CORD CAP ON ALL EQUIPMENT UNDER THE VENT HOOD AND CONNECT EQUIPMENT.



systems engineering
automation power electrical

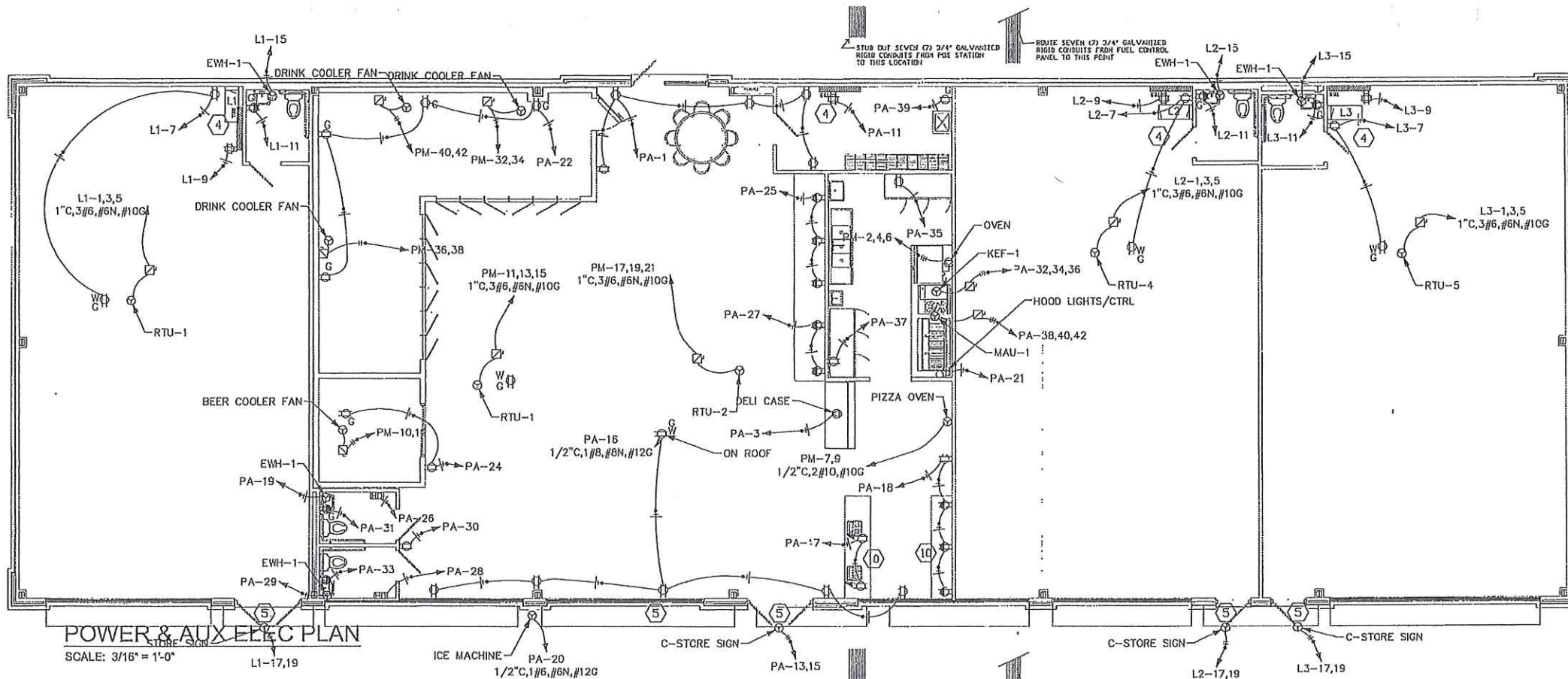
142 Woodberry Place, Madison, MS 39110
601-214-5513 LannyPurvisPE@SystemsEngr.com

PLOTTED ON 02/29/2016 4:55:26 PM

ELECTRICAL NOTES	Gluckstadt, MS
clingan and associates architect	Rev. 02.29.16
5339 I-55 NORTH, STE. 110B JACKSON, MISS. 39206-4141 PHONE AND FAX 601-713-0993 E-MAIL: clinganassociates@live.com	Rev. 02.29.16
ALL MATERIAL HEREIN © 2015 CLINGAN AND ASSOCIATES ARCHITECT	Rev. 02.29.16

E2

1/21
2/6



- NOTES THIS SHEET**
- CONTRACTOR SHALL VERIFY AND COORDINATE THE EXACT LOCATION OF ALL DEVICES WITH THE ARCHITECTURAL PLANS.
 - ALL WORK SHALL BE DONE IN ACCORDANCE WITH FEDERAL, STATE, AND LOCAL CODES AND THE LATEST EDITION OF THE NEC.
 - FURNISH AND INSTALL 2 - 4" PVC CONDUITS FROM THE TRANSFORMER PAD TO THE UTILITY CO. POLE. ONE CONDUIT TO RISE UP POLE AS REQUIRED, ONE CONDUIT TO BE CAPPED AT BASE OF POLE.
 - BACKWARD TO THE PROPERTY LINE AS DIRECTED BY LOCAL TELEPHONE VENDOR FOR TELEPHONE SERVICE ENTRANCE. INSTALL PULL STRING/WIRE IN CONDUIT.
 - THIS JUNCTION BOX TO BE INSTALLED ABOVE ACCESSIBLE CEILING FOR CONNECTION TO BUILDING MOUNTED SIGN. VERIFY EXACT LOCATION PRIOR TO INSTALLATION.
 - VERIFY EXACT LOCATION OF THIS DEVICE PRIOR TO INSTALLATION. INSTALL ABOVE ACCESSIBLE CEILING FOR SIGNAGE. PROVIDE CORD AND CAP AS REQUIRED FOR FINAL INSTALLATION.
 - VERIFY EXACT LOCATION OF THIS DEVICE PRIOR TO INSTALLATION. INSTALL ABOVE ACCESSIBLE CEILING FOR CONNECTION TO ACCESSIBLE TRANSFORMER.
 - INSTALL A DUPLEX RECEPTACLE ABOVE ACCESSIBLE CEILING OR AS DIRECTED FOR CONNECTION OF WINDOW NEON SIGNS. NEON SIGNS TO BE FURNISHED AND INSTALLED BY OTHERS.
 - INSTALL A JUNCTION BOX AND SINGLE POLE SWITCH AT COOLER WALL AND ABOVE ACCESSIBLE CEILING FOR CONNECTION TO NEON TRANSFORMERS, NEON AND TRANSFORMERS TO BE FURNISHED AND INSTALLED BY OTHERS. ELECTRICAL CONTRACTOR TO MAKE FINAL CONNECTION AT J-BOX.
 - INSTALL THESE DEVICES IN CASEWORK AS DIRECTED BY THE ARCHITECT.
 - CONTRACTOR SHALL VERIFY THE EXCT LOCATION AND MOUNTING HEIGHT WITH VENDOR DRAWINGS.
 - FURNISH AND INSTALL A RECEPTACLE, AS REQUIRED, AND HALE CORD CAP ON ALL EQUIPMENT UNDER THE VENT HOOD AND CONNECT EQUIPMENT.

VMD	CS
VMD1	
VMD2	
VMD3	
VPA	
LC	PB
TPG	
TPM	
TPP	

POWER & AUX ELEC PLAN
SCALE: 3/16" = 1'-0"

RECEPTACLE SCHEDULE

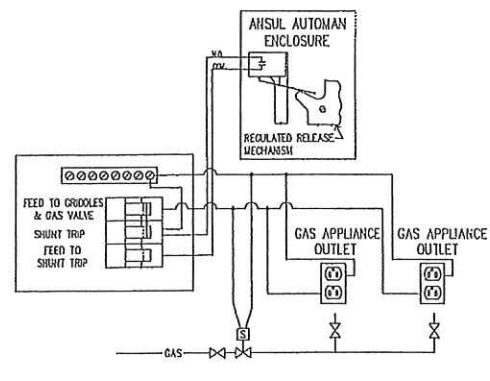
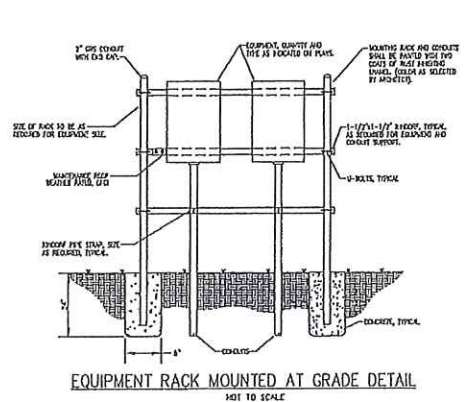
CALLOUT	SYMBOL	REMARKS	VOLTS	FEATURES
COUNTER	⊗	5-20R	120V 1P 2W	CND
COUNTER	⊗	5-20R	120V 1P 2W	0, CND
GFC	⊗	5-15R	120V 1P 2W	0, CND
Hand Dryer	⊗	5-15R	120V 1P 2W	CND
DJAD	⊗	5-15R	120V 1P 2W	CND
STANDARD	⊗	5-15R	120V 1P 2W	CND
WEATHERPROOF	⊗	5-15R	120V 1P 2W	W, C, CND

Telephone and Data Schedule

CALLOUT	SYMBOL	NOTE 1	NOTE 2	NOTE 3
Duplex Telephone / Computer Outlet	⊗	TELEPHONE OUTLET AND COMPUTER RAS CALL JACK, 4" x 4" 2" FLUSH MOUNTED OUTLET BOX.	WITH 1/2" CONDUIT STUBBED-UP ABOVE THE ACCESSIBLE CEILING.	MOUNT OUTLET BOX 18" AFT. PROVIDE WITH PULLWIRE IN CONDUIT.
TBB	⊗	4" x 4" x 3/4" PLYWOOD PAINTED TWO COATS BLUE ENAMEL.	PROVIDE ONE #10G - 1/2" CONDUIT CONNECTED TO THE BUILDING SERVICE GROUND.	ROUTE ONE 3" CONDUIT FROM BACKBOARD TO PROPERTY LINE AS DIRECTED BY LOCAL TELEPHONE VENDOR FOR TELEPHONE SERVICE ENTRANCE. INSTALL PULL STRING/WIRE IN CONDUIT.

VOLTAGE DROP SCHEDULE

DEVICE	FEDER	BRANCH CIRCUIT	TOTAL VOLTAGE DROP			
VOLTS	VOLTAGE DROP	WIRE SIZE	LENGTH	MAX VOLTAGE DROP	WIRE SIZE	
UTL TRANS	0X	#8	-	-	-	0X
101	0.2X	#1/0	27'	-	-	0.1X
L1	0.7X	#1/0	146'	0.63X (OKT 17,18)	#12	1.33X
102	0.15X	#1/0	56'	-	-	0.10X
L2	0.35X	#1/0	22'	0.61X (OKT 17,18)	#12	0.97X
103	0.2X	#1/0	29'	-	-	0.2X
L3	0.32X	#1/0	29'	0.59X (OKT 17,18)	#12	0.92X
10-CG	0.72X	(2)100con	180'	-	-	0.72X
PP	1X	(2)100con	122'	-	-	1X
LC	1.65X	1500con	10'	-	-	1.65X
FO	1.1X	1500con	11'	2.77X (OKT 20,31)	#12	3.07X
PA	1.05X	#1/0	10'	3.61X (OKT 20)	#12	4.84X
PG	1.11X	#1/0	13'	2.34X (OKT 27)	#8	4.00X
PL	1.14X	1250con	12'	2.58X (OKT 7,9)	#10	3.7X



EQUIPMENT RACK MOUNTED AT GRADE DETAIL
NOT TO SCALE

FIRE SUPPRESSION FOR GAS APPLIANCES - KITCHEN HOOD WIRING DETAIL
NOT TO SCALE

systems engineering automation power electrical
142 Woodberry Place, Madison, MS 39110
601-214-5513 LannyPurvisPE@SystemsEngr.com
PLOTTED ON 8/29/2016 4:55:45 PM

ELECTRICAL NOTES

clingan and associates architect
5339 I-55 NORTH, STE. 110B
JACKSON, MISS. 39206-4141
PHONE AND FAX 601-713-0993
E-MAIL: cclinganassociates@live.com

Rev	8.23.16	Rev	
Rev	LEP	Rev	
Rev	1/16	Rev	

Gluckstadt, MS

E3

1/3
2/0

PP		VOLTS 208Y/120V 3P 4W			AC 25,000		
ROOM		BUS AMPS 400			MAIN BDR L&D		
MOUNTING SURFACE		NEUTRAL 100%			LUSS STANDARD		
FEED FROM		VOLTAGE			WIRE SIZE		
NOTE							
CON. KVA	CALC. KVA	CON. KVA	CALC. KVA	CON. KVA	CALC. KVA	CON. KVA	CALC. KVA
LIGHTING 31.7	43.1 (125%)	CONTINUOUS 0.3	0.25 (75%)	HEATING 30.0	30.0 (100%)	NONCONTINUOUS 2.8	4.28 (100%)
LARGEST MOTOR 15.1	27.8 (125%)	OTHER MOTORS 3.0	3.0 (100%)	MOTOR EQUIP 0	0 (N/A)	RECEPTACLES 11.7	10.9 (500%)
TOTAL KVA 713		785		TOTAL KVA 713		785	
BALANCED THREE PHASE AMPS 591							

PA		VOLTS 208Y/120V 3P 4W			AC 35,000		
ROOM		BUS AMPS 215			MAIN BDR L&D		
MOUNTING SURFACE		NEUTRAL 100%			LUSS STANDARD		
FEED FROM		VOLTAGE			WIRE SIZE		
NOTE							
CON. KVA	CALC. KVA	CON. KVA	CALC. KVA	CON. KVA	CALC. KVA	CON. KVA	CALC. KVA
LIGHTING 1.8	10.1 (125%)	CONTINUOUS 0	0 (100%)	HEATING 0	0 (100%)	NONCONTINUOUS 2.85	2.85 (100%)
LARGEST MOTOR 1.8	2.05 (125%)	OTHER MOTORS 0	0 (100%)	MOTOR EQUIP 3	3 (100%)	RECEPTACLES 11.7	10.9 (500%)
TOTAL KVA 785		785		TOTAL KVA 785		785	
BALANCED THREE PHASE AMPS 613							

PG		VOLTS 208Y/120V 3P 4W			AC 35,000		
ROOM		BUS AMPS 150			MAIN BDR L&D		
MOUNTING SURFACE		NEUTRAL 100%			LUSS STANDARD		
FEED FROM		VOLTAGE			WIRE SIZE		
NOTE							
CON. KVA	CALC. KVA	CON. KVA	CALC. KVA	CON. KVA	CALC. KVA	CON. KVA	CALC. KVA
LIGHTING 0	0 (125%)	CONTINUOUS 0	0 (100%)	HEATING 0	0 (100%)	NONCONTINUOUS 3.4	3.4 (100%)
LARGEST MOTOR 0	0 (100%)	OTHER MOTORS 2.8	2.8 (100%)	MOTOR EQUIP 0	0 (N/A)	RECEPTACLES 0	0 (N/A)
TOTAL KVA 352		352		TOTAL KVA 352		352	
BALANCED THREE PHASE AMPS 311							

L1		VOLTS 208Y/120V 3P 4W			AC 25,000		
ROOM		BUS AMPS 215			MAIN BDR L&D		
MOUNTING SURFACE		NEUTRAL 100%			LUSS STANDARD		
FEED FROM		VOLTAGE			WIRE SIZE		
NOTE							
CON. KVA	CALC. KVA	CON. KVA	CALC. KVA	CON. KVA	CALC. KVA	CON. KVA	CALC. KVA
LIGHTING 1.34	1.7 (125%)	CONTINUOUS 0.8	1 (125%)	HEATING 13.2	13.2 (100%)	NONCONTINUOUS 1.44	1.44 (100%)
LARGEST MOTOR 13.2	20.6 (125%)	OTHER MOTORS 0	0 (100%)	MOTOR EQUIP 0	0 (N/A)	RECEPTACLES 0.51	0.51 (500%)
TOTAL KVA 354		354		TOTAL KVA 354		354	
BALANCED THREE PHASE AMPS 554							

PM		VOLTS 208Y/120V 3P 4W			AC 35,000		
ROOM		BUS AMPS 250			MAIN BDR L&D		
MOUNTING SURFACE		NEUTRAL 100%			LUSS STANDARD		
FEED FROM		VOLTAGE			WIRE SIZE		
NOTE							
CON. KVA	CALC. KVA	CON. KVA	CALC. KVA	CON. KVA	CALC. KVA	CON. KVA	CALC. KVA
LIGHTING 0	0 (125%)	CONTINUOUS 0.2	0.25 (125%)	HEATING 33.3	33.3 (100%)	NONCONTINUOUS 0	0 (100%)
LARGEST MOTOR 15.1	27.8 (125%)	OTHER MOTORS 0	0 (100%)	MOTOR EQUIP 8	8 (100%)	RECEPTACLES 0	0 (500%)
TOTAL KVA 758		758		TOTAL KVA 758		758	
BALANCED THREE PHASE AMPS 513							

PB		VOLTS 208Y/120V 3P 4W			AC 35,000		
ROOM		BUS AMPS 215			MAIN BDR L&D		
MOUNTING SURFACE		NEUTRAL 100%			LUSS STANDARD		
FEED FROM		VOLTAGE			WIRE SIZE		
NOTE							
CON. KVA	CALC. KVA	CON. KVA	CALC. KVA	CON. KVA	CALC. KVA	CON. KVA	CALC. KVA
LIGHTING 2.8	3.3 (125%)	CONTINUOUS 0	0 (100%)	HEATING 0	0 (100%)	NONCONTINUOUS 0	0 (100%)
LARGEST MOTOR 17.2	21.5 (125%)	OTHER MOTORS 0	0 (100%)	MOTOR EQUIP 0	0 (N/A)	RECEPTACLES 0	0 (500%)
TOTAL KVA 352		352		TOTAL KVA 352		352	
BALANCED THREE PHASE AMPS 313							

L2		VOLTS 208Y/120V 3P 4W			AC 25,000		
ROOM		BUS AMPS 215			MAIN BDR L&D		
MOUNTING SURFACE		NEUTRAL 100%			LUSS STANDARD		
FEED FROM		VOLTAGE			WIRE SIZE		
NOTE							
CON. KVA	CALC. KVA	CON. KVA	CALC. KVA	CON. KVA	CALC. KVA	CON. KVA	CALC. KVA
LIGHTING 1.24	1.6 (125%)	CONTINUOUS 0	0 (100%)	HEATING 12.2	12.2 (100%)	NONCONTINUOUS 1.44	1.44 (100%)
LARGEST MOTOR 17.2	21.5 (125%)	OTHER MOTORS 0	0 (100%)	MOTOR EQUIP 0	0 (N/A)	RECEPTACLES 0.8	0.8 (500%)
TOTAL KVA 354		354		TOTAL KVA 354		354	
BALANCED THREE PHASE AMPS 516							

L3		VOLTS 208Y/120V 3P 4W			AC 25,000		
ROOM		BUS AMPS 215			MAIN BDR L&D		
MOUNTING SURFACE		NEUTRAL 100%			LUSS STANDARD		
FEED FROM		VOLTAGE			WIRE SIZE		
NOTE							
CON. KVA	CALC. KVA	CON. KVA	CALC. KVA	CON. KVA	CALC. KVA	CON. KVA	CALC. KVA
LIGHTING 1.31	1.7 (125%)	CONTINUOUS 0	0 (100%)	HEATING 12.2	12.2 (100%)	NONCONTINUOUS 1.44	1.44 (100%)
LARGEST MOTOR 13.2	20.6 (125%)	OTHER MOTORS 0	0 (100%)	MOTOR EQUIP 0	0 (N/A)	RECEPTACLES 0.9	0.9 (500%)
TOTAL KVA 354		354		TOTAL KVA 354		354	
BALANCED THREE PHASE AMPS 516							

DEVICE	FAULT	AIC	A-N	UTILITY	FEED FROM	FEEDER	TRANSFORMER	TOTAL MOTOR	DIRECTLY CONNECTED MOTOR LOAD						
FAULT	AIC	VOLTS	FAULT	X	R	SIZE	X / 1000'	R / 1000'	LENGTH	X	R	KVA	FAULT	X	R
UTL TRANS	58,381	85,000	120V	55,556	0.002118	0.0004236				500	2.5	5	0.002118	0.0004236	815
L01	20,118	22,000	120V	20,028	0.004473	0.003985	1/0	0.041	0.062	57'	0.0024	0.0036			
L1	7,169	22,000	120V	7,179	0.01046	0.01304	1/0	0.041	0.062	110'	0.000	0.0091			
L02	20,017	22,000	120V	19,930	0.004491	0.004011	1/0	0.041	0.062	58'	0.0024	0.0036			
L2	12,274	22,000	120V	12,243	0.006518	0.007229	1/0	0.041	0.062	52'	0.0021	0.0032			
L03	19,733	22,000	120V	19,848	0.00454	0.004066	1/0	0.041	0.062	59'	0.0024	0.0037			
L3	14,418	22,000	120V	14,460	0.008123	0.00848	1/0	0.041	0.062	39'	0.0016	0.0024			
WD-CS	32,004	42,000	120V	37,970	0.003324	0.001718	1/0	0.041	0.062	59'	0.0012	0.0013			
PP	38,170	42,000	120V	37,333	0.003389	0.003717	1/0	0.041	0.062	33'	0.0025	0.0035			
LC	23,979	35,000	120V	23,700	0.001309	0.002339	1/0	0.041	0.062	18'	0.0026	0.0034			
PB	71,445	30,000	120V	20,970	0.001656	0.003258	1/0	0.041	0.062	11'	0.004	0.004			
PA	22,308	35,000	120V	21,844	0.001482	0.003119	1/0	0.041	0.062	18'	0.0027	0.001			
PO	22,842	30,000	120V	22,185	0.001433	0.003323	1/0	0.041	0.062	15'	0.0028	0.001			
PH	24,165	35,000	120V	23,450	0.001428	0.003284	1/0	0.041	0.062	12'	0.0025	0.0026			

1. Utility transformer shall be mounted a minimum of 20' away from any main disconnect for AIC ratings to be valid.
 2. Utility transformer primary shall be 12.4kV or less primary for AIC ratings to be valid.
 3. Phase contact whether for AIC ratings if above changes.



systems engineering
 automation power electrical
 142 Woodberry Place, Madison, MS 39110
 601-214-5513 LannyPurvisPE@SystemsEngr.com
 PLOTTED ON 8/29/2016 4:56:03 PM

ELECTRICAL NOTES
clingan and associates
 architect
 5339 I-55 NORTH, STE. 110B
 JACKSON, MISS. 39206-4141
 PHONE AND FAX 601-713-0993
 E-MAIL: clinganassociates@live.com
 ALL MATERIAL HEREIN © 2015 CLINGAN AND ASSOCIATES ARCHITECT

Gluckstadt, MS
 Date: 8.28.16
 By: LEP
 Date: 8/28/16
 By: [Signature]

E4
 24
 05
 26



1
2
3
4
5
6
7
8
9
10
11
12
13
14
15
16
17
18
19
20
21
22
23
24
25
26
27
28
29
30
31
32
33
34
35
36
37
38
39
40
41
42
43
44
45
46
47
48
49
50
51
52
53
54
55
56
57
58
59
60
61
62
63
64
65
66
67
68
69
70
71
72
73
74
75
76
77
78
79
80
81
82
83
84
85
86
87
88
89
90
91
92
93
94
95
96
97
98
99
100

101
102
103
104
105
106
107
108
109
110
111
112
113
114
115
116
117
118
119
120
121
122
123
124
125
126
127
128
129
130
131
132
133
134
135
136
137
138
139
140
141
142
143
144
145
146
147
148
149
150

THE
BRANDON MARKET

2 for 4.50
1 Liter Cans

OPEN

Coca-Cola

2 for 5.3

20oz. Bottles

♿
ACCESSIBLE
PARKING
VAN
PERMIT

Chevron



1

Turn Off Engine
No Smoking

with
TECHRON

It's what's inside
that counts.

Chevron with TECHRON

000
0000

Pay with
MasterCard
or
Pay with
LifeSaver
8 Points for Bucks

Pay with
MasterCard
or
Pay with
LifeSaver
8 Points for Bucks

Chevron



3

with
TECHRON

with
TECHRON

000
0000

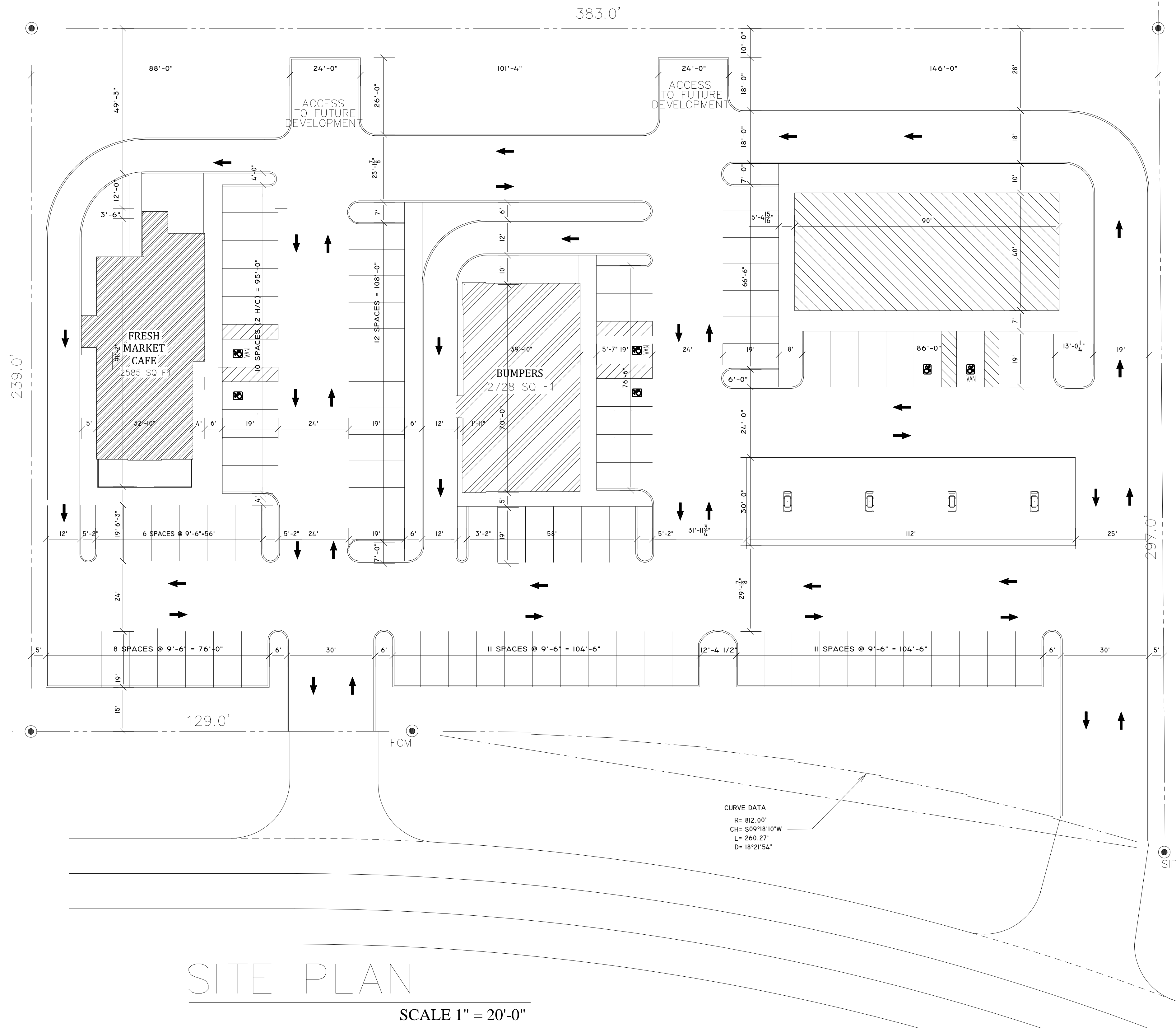
Pay with
MasterCard
or
Pay with
LifeSaver
8 Points for Bucks

Pay with
MasterCard
or
Pay with
LifeSaver
8 Points for Bucks

Trash

Towel





SITE PLAN
SCALE 1" = 20'-0"

PROJECT NO: 21.18
SHEET NO: C1 OF

CALHOUN STATION PARKWAY
GLUCKSTADT, MISSISSIPPI

E. Lantz Kuykendall, RA
Architect
5127 Reddoch Dr.
Jackson, Mississippi 39211
(601)214-1824

DATE: 7/26/2021
DRAWN: CLK
DESIGNED: CLK
CHECKED: CLK
REVISED: